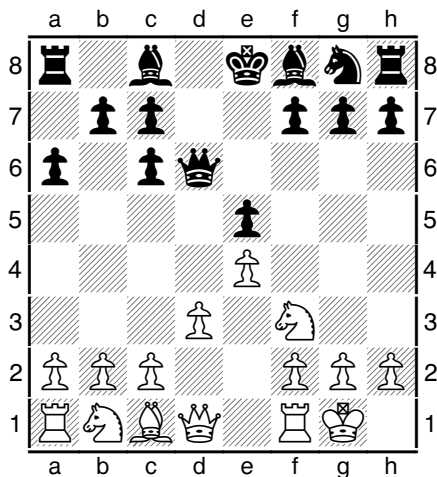
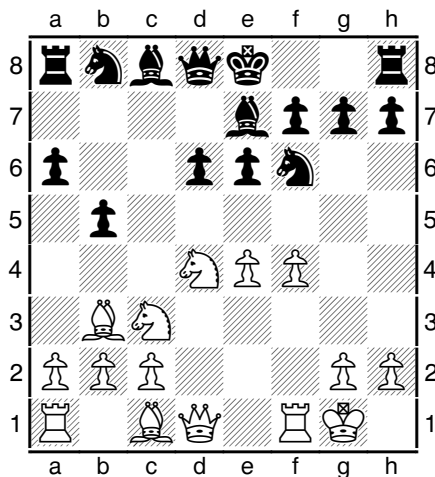


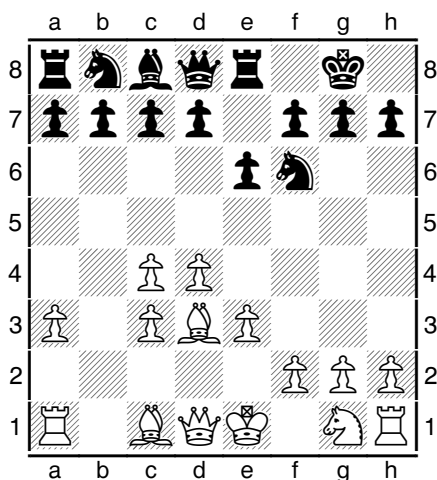
The Test



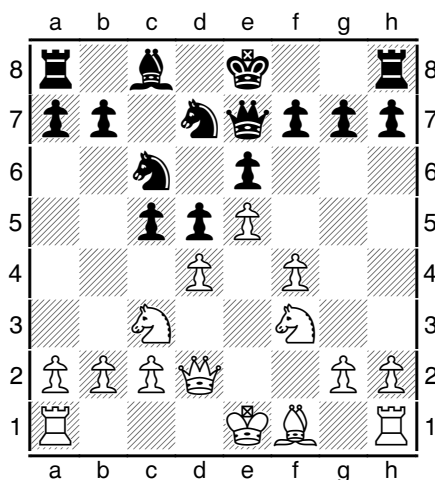
(1) What Opening is this?



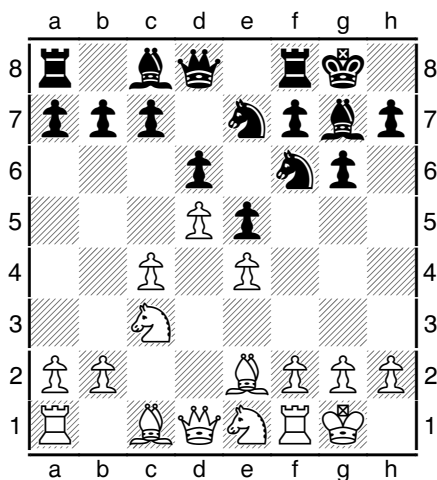
(4) What Opening is this?



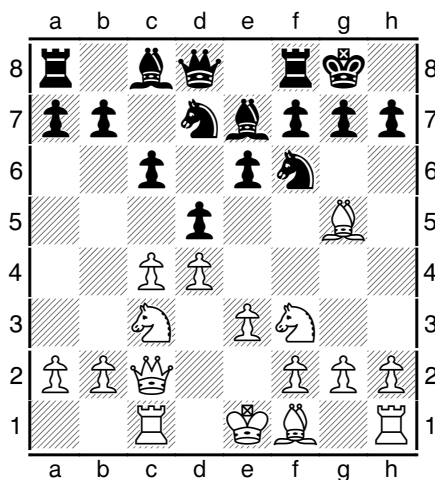
(2) What Opening is this?



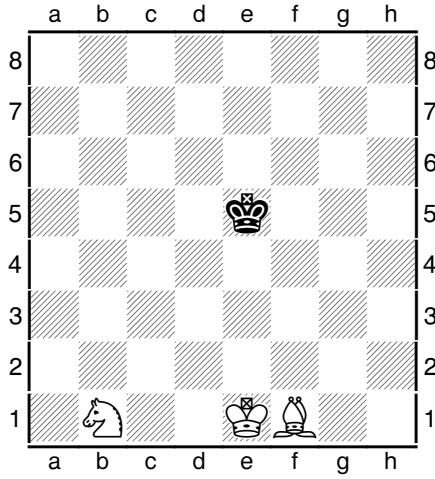
(5) What Opening is this?



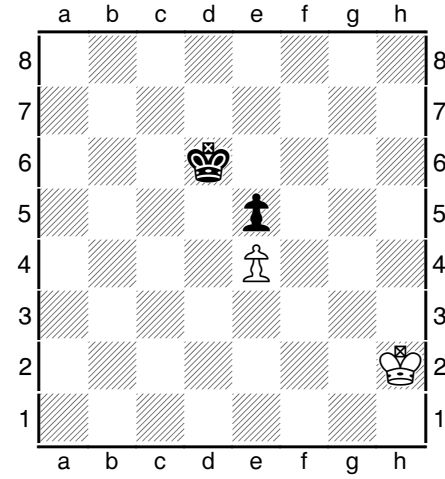
(3) What Opening is this?



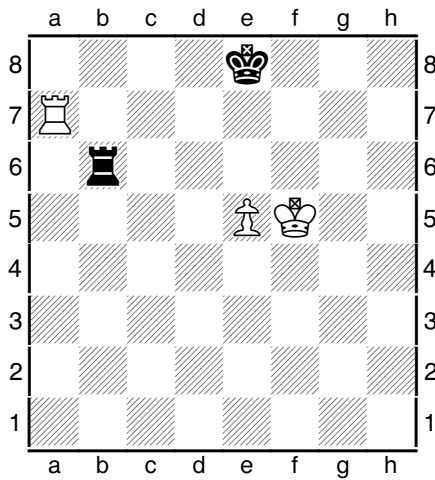
(6) What Opening is this?



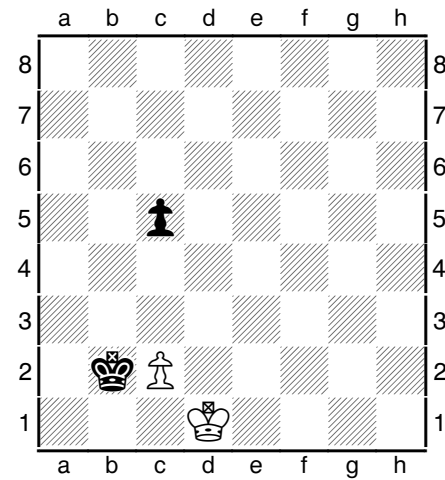
(7) Can you win with white in 20 moves? What would be your strategy with black?



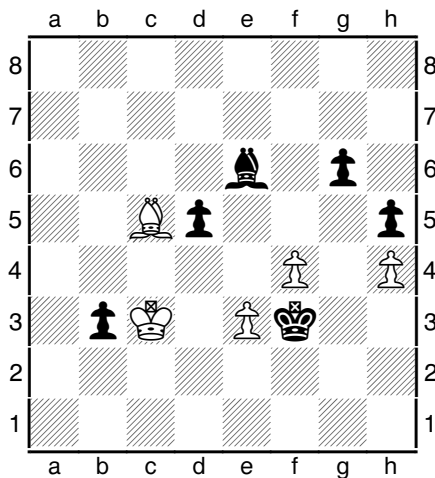
(10) White to move, what is the result?



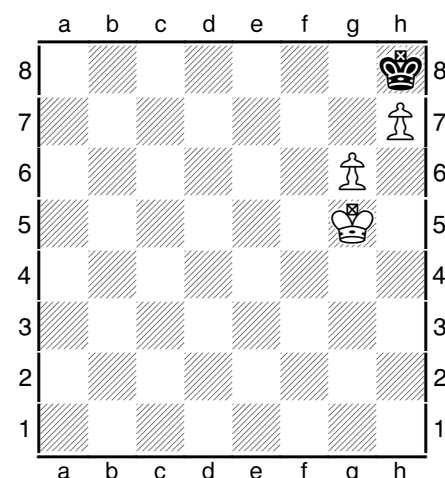
(8) White to move, can you win?



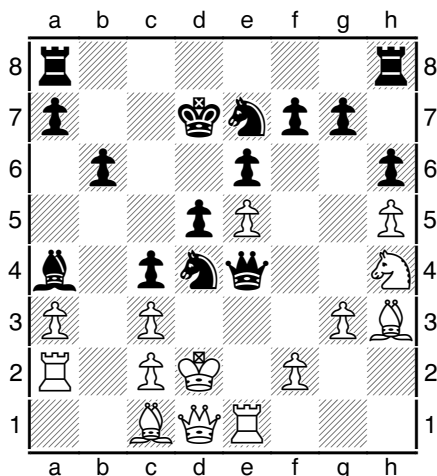
(11) What is white's best move?



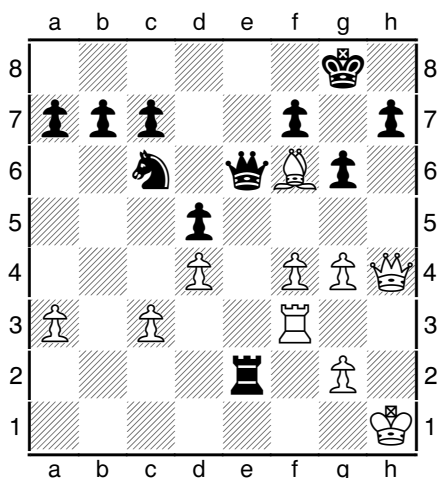
(9) Can you win with black?



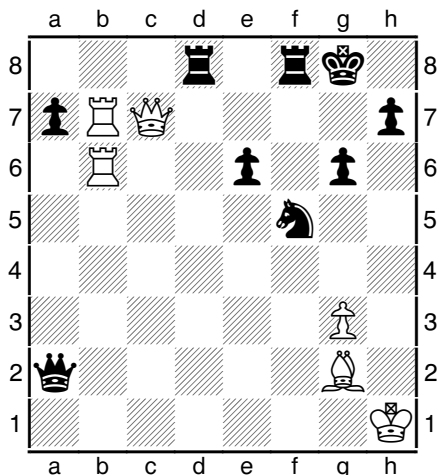
(12) Can white win?



(13) Black to mate in 2



(14) White to mate in 3



(15) White to mate in 5

ANSWERS

- (1) What Opening is this? Spanish Exchange Variation.
- (2) What Opening is this? Nimzo-Indian Defence.
- (3) What Opening is this? King's Indian Defence, Mar del Plata Variation
- (4) What Opening is this? Sicilian Sozin-Najdorf Variation
- (5) What Opening is this? French Classical Variation
- (6) What Opening is this? Queen's Gambit Declined.
- (7) Can you win with white in 20 moves? What would be your strategy with black? It is possible for white to win in <20 moves. Best defensive strategy; move your king to the opposite corner controlled by the bishop. E.g. dark square such as h8
- (8) White to move, can you win? No, it's a draw after 1..e6 2.Rb1 and checks from behind.
- (9) Can you win with black? Usually with opposite coloured bishops the games are difficult to win, but World Champion Botvinnik won from this position using a famous breakthrough technique. 1..d4 2.exd4 g5
- (10) White to move, what is the result? Draw, but white must lose his pawn and get the opposition.
- (11) What is white's best move? 1.c4 and after 1..Kc3 2.Kc1 Kxc4 3.Kc2 white is a pawn down but has the opposition and the game is a draw.
- (12) Can white win? Yes! 1.Kf5 (Not 1.Kf6? stalemate) 1..Kg7 2.h8=Q (white must sacrifice) 2..Kxh8 3.Kf6 Kg8 4.g7 Kh7 5.Kf7 and get a queen next move.
- (13) 1.Nb3+ cxb3 2. Qd3#
- (14) 1.Qxh7 Kxh7 2.Rh3+ Kg8 3.Rh8#
- (15) 1...Rd1+ [1...Qa1+ 2.Kh2 Qg7 may be better for black, but there is a mate possible] 2..Kh2 Qxg2+ A tough sacrifice to spot 3.Kxg2 Ne3+ 4.Kh2 [4..Kh3 Rh1#] 4...Rf2+ 5.Kh3 Rh1#